

Clarinet

# Major Scales

## Stage 1 - Octave 1

Guthrie

	1	2	3	4	5	6	7	8	
G/A									
C/D									
F/G									
Bb/C									
Eb/F									
Ab/Bb									
Db/Eb									

Clarinet

# Major Scales

## Stage 1 - Octave 2

Guthrie

	<b>1</b>	<b>2</b>	<b>3</b>	<b>4</b>	<b>5</b>	<b>6</b>	<b>7</b>	<b>8</b>
G/A								
	1.1	TR123/456/RPB	TR123/456/LPR	TR123/456	TR123/45	TR123/5	TR123/LPG	TR12
C/D								
	TR123/456	TR123/45	TR123/5	TR123	TR12	TR1	TR23/45	TR23/4/RPY
F/G								
	Open	1.1	TR123/456/RPR/LPB	TR123/456/RPR	TR123/456	TR123/45	TR123/5	TR123
Bb/C								
	TR123/456/RPR	TR123/456	TR123/45	TR123/4	TR123	TR12	TR1	TR
Eb/F								
	T	Open	1.1	R/(1.1)	TR123/456/RPR	TR123/456	TR123/45	TR123/4
Ab/Bb								
	R/1.1	TR123/456	TR123/456	TR123/456/RPY	TR123/4	TR123	TR12	TR12/(3.1)
Db/Eb								
	TR123/456/RPY	TR123/4	TR123	TR123/LPG	TR12/(3.1)	TR	TR23/4/RPY	TR23/4/(6.1)/RPY

Clarinet

# Major Scales Stage 1 - Octave 3 Fingerings

Guthrie

	1	2	3	4	5	6	7	8
G/A								
	T123/45	T123/5	T123/LPG	T12	T1	1	1B	1A
C/D								
	T12	T1	1	Open	1A	TR123/456/LPB	TR123/456/RPG	TR123/456
F/G								
	TR123	TR12	TR1	TR	TR23/4/RPY	TR23/RPY	TR2/RPY	TR2/45/RPY
Bb/C								
	T123	T12	T1	T	Open	1A	TR123/456/RPR/LPB	TR/123/456/RPR
Eb/F								
	TR123/4	TR123	TR12	TR12/3.1	TR	TR23/4/RPY	TR23/RPY	TR23/LPG/RPY
Ab/Bb								
	T123/4	T12	T12/3.1	T	Open	1A	R1A	
Db/Eb								
	T12/3.1	T	Open	1B	R1A	TR123/456/RPR	TR123/456	TR123/456/RPY

Note: Only F and Eb can be played three octaves

# Clarinet

## Major Scales Stage 2 - Octave 1

Guthrie

The image displays seven staves of musical notation for the Clarinet, each representing a different key signature. The notation is in treble clef with a common time signature (C). Each staff begins with a key signature change (sharps or flats) and a common time signature. The scales are written in a single octave, starting on the middle C (C4) and ending on the G above (G5). The scales are: G/A (one sharp), C/D (two sharps), F/G (one sharp), Bb/C (two flats), Eb/F (three flats), Ab/Bb (four flats), and Db/Eb (five flats). The notes are connected by slurs, and there are fermatas at the end of each scale.

G/A

C/D

F/G

Bb/C

Eb/F

Ab/Bb

Db/Eb

# Clarinet

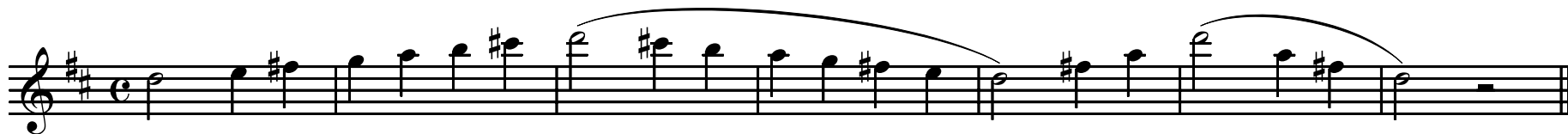
## Major Scales Stage 2 - Octave 2

Guthrie

G/A



C/D



F/G



Bb/C



Eb/F



Ab/Bb



Db/Eb



# Clarinet

## Major Scales Stage 3 - Octave 1

Guthrie

The image displays seven staves of musical notation for the Clarinet, each representing a different key signature. The notation is in treble clef with a common time signature (C). Each staff begins with a key signature change (sharps or flats) and a common time signature. The scales are written in a stepwise fashion, with slurs indicating the flow of the melody. The keys are: G/A, C/D, F/G, Bb/C, Eb/F, Ab/Bb, and Db/Eb. The notation includes various note values (quarter, eighth, and sixteenth notes) and rests, with slurs connecting the notes across the staves.

G/A

C/D

F/G

Bb/C

Eb/F

Ab/Bb

Db/Eb

# Clarinet

## Major Scales Stage 3 - Octave 2

Guthrie

G/A

Musical notation for the G/A major scale in treble clef, common time. The key signature has two sharps (F# and C#). The scale is written as a single line of music with a treble clef, a common time signature, and a key signature of two sharps. The notes are G4, A4, B4, C#5, D5, E5, F#5, G5, F#5, E5, D5, C#5, B4, A4, G4. The notes are grouped into four measures with slurs. The first measure contains G4, A4, B4, C#5. The second measure contains D5, E5, F#5, G5. The third measure contains F#5, E5, D5, C#5. The fourth measure contains B4, A4, G4, followed by a whole rest. The piece ends with a double bar line.

C/D

Musical notation for the C/D major scale in treble clef, common time. The key signature has one sharp (F#). The scale is written as a single line of music with a treble clef, a common time signature, and a key signature of one sharp. The notes are C4, D4, E4, F#4, G4, A4, B4, C5, B4, A4, G4, F#4, E4, D4, C4. The notes are grouped into four measures with slurs. The first measure contains C4, D4, E4, F#4. The second measure contains G4, A4, B4, C5. The third measure contains B4, A4, G4, F#4. The fourth measure contains E4, D4, C4, followed by a whole rest. The piece ends with a double bar line.

F/G

Musical notation for the F/G major scale in treble clef, common time. The key signature has one sharp (F#). The scale is written as a single line of music with a treble clef, a common time signature, and a key signature of one sharp. The notes are F4, G4, A4, B4, C5, B4, A4, G4, F#4, E4, D4, C4, B3, A3, F4. The notes are grouped into four measures with slurs. The first measure contains F4, G4, A4, B4. The second measure contains C5, B4, A4, G4. The third measure contains F#4, E4, D4, C4. The fourth measure contains B3, A3, F4, followed by a whole rest. The piece ends with a double bar line.

Bb/C

Musical notation for the Bb/C major scale in treble clef, common time. The key signature has no sharps or flats. The scale is written as a single line of music with a treble clef, a common time signature, and a key signature of no sharps or flats. The notes are Bb3, C4, D4, E4, F4, G4, A4, Bb4, Ab4, G4, F4, E4, D4, C4, Bb3. The notes are grouped into four measures with slurs. The first measure contains Bb3, C4, D4, E4. The second measure contains F4, G4, A4, Bb4. The third measure contains Ab4, G4, F4, E4. The fourth measure contains D4, C4, Bb3, followed by a whole rest. The piece ends with a double bar line.

Eb/F

Musical notation for the Eb/F major scale in treble clef, common time. The key signature has one flat (Bb). The scale is written as a single line of music with a treble clef, a common time signature, and a key signature of one flat. The notes are Eb3, F3, G3, Ab3, Bb3, C4, D4, Eb4, Db3, C3, Bb2, Ab2, F3, Eb3. The notes are grouped into four measures with slurs. The first measure contains Eb3, F3, G3, Ab3. The second measure contains Bb3, C4, D4, Eb4. The third measure contains Db3, C3, Bb2, Ab2. The fourth measure contains F3, Eb3, followed by a whole rest. The piece ends with a double bar line.

Ab/Bb

Musical notation for the Ab/Bb major scale in treble clef, common time. The key signature has two flats (Bb and Eb). The scale is written as a single line of music with a treble clef, a common time signature, and a key signature of two flats. The notes are Ab2, Bb2, C3, Db3, Eb3, F3, G3, Ab3, Gb2, F2, Eb2, Db2, C3, Ab2. The notes are grouped into four measures with slurs. The first measure contains Ab2, Bb2, C3, Db3. The second measure contains Eb3, F3, G3, Ab3. The third measure contains Gb2, F2, Eb2, Db2. The fourth measure contains C3, Ab2, followed by a whole rest. The piece ends with a double bar line.

Db/Eb

Musical notation for the Db/Eb major scale in treble clef, common time. The key signature has three flats (Bb, Eb, and Ab). The scale is written as a single line of music with a treble clef, a common time signature, and a key signature of three flats. The notes are Db2, Eb2, F2, Gb2, Ab2, Bb2, C3, Db3, Cb2, Bb1, Ab1, Gb1, F2, Db2. The notes are grouped into four measures with slurs. The first measure contains Db2, Eb2, F2, Gb2. The second measure contains Ab2, Bb2, C3, Db3. The third measure contains Cb2, Bb1, Ab1, Gb1. The fourth measure contains F2, Db2, followed by a whole rest. The piece ends with a double bar line.

Clarinet

# The Seven

[Composer]

8 G

8 C

15 F

22 Bb

29 Eb

36 Ab

43 Db